

Lower Ground Floor

Key:

▼ Non illuminated Fire Exit sign

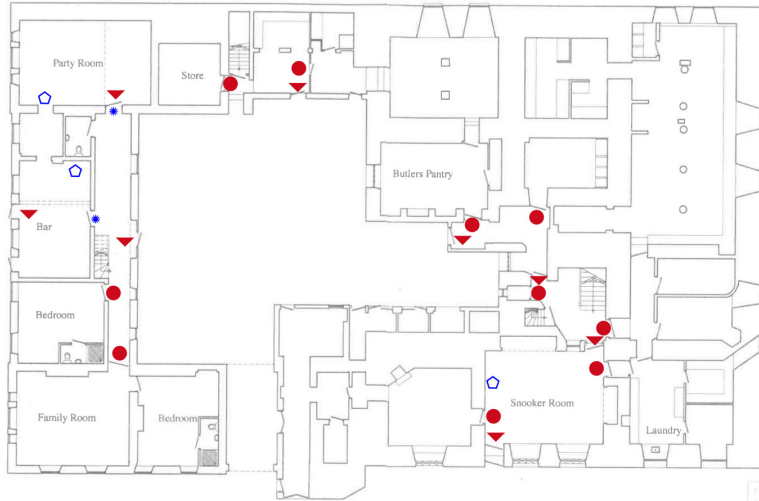
● Fire Door Keep Locked Shut sign

● Emergency Downlight

□ Bulkhead

◇ Twin Spot

● FD305 - Intumescent Strips to apply all round edge of door and Perko door closers to fit



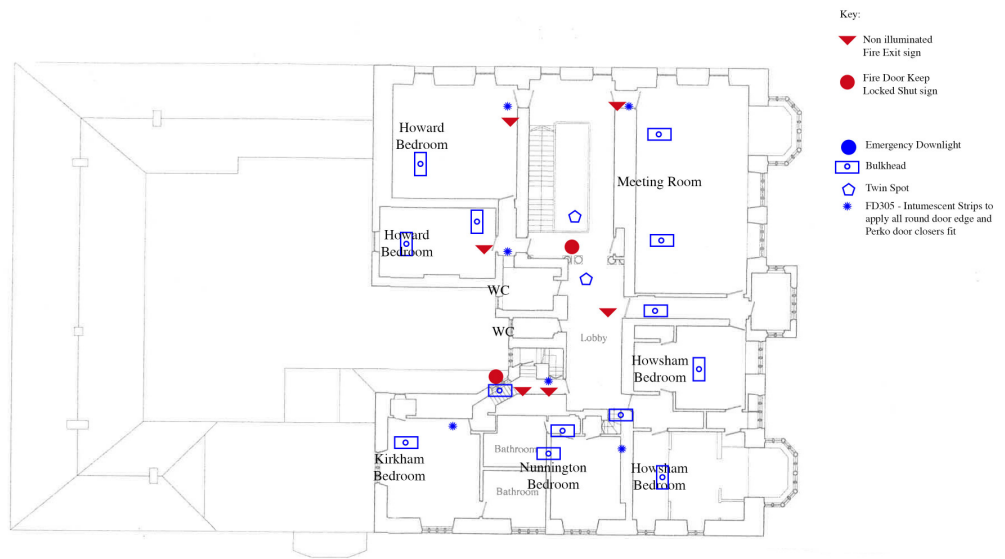
HOWSHAM HALL, HOWSHAM

FOR DINE LTD

PROPOSED FIRE IMPROVEMENT WORKS
LOWER GROUND FLOOR PLAN

matthewsomee
interior design & architecture

Second Floor



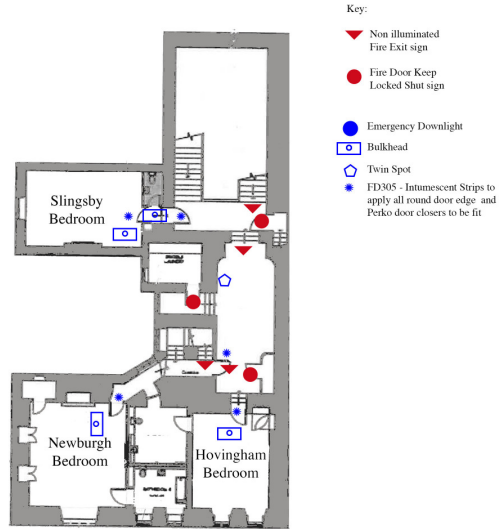
HOWSHAM HALL, HOWSHAM

FOR DINE LTD

PROPOSED FIRE IMPROVEMENT WORKS
SECOND FLOOR PLAN

matthews mee
interior design & architecture

First Floor



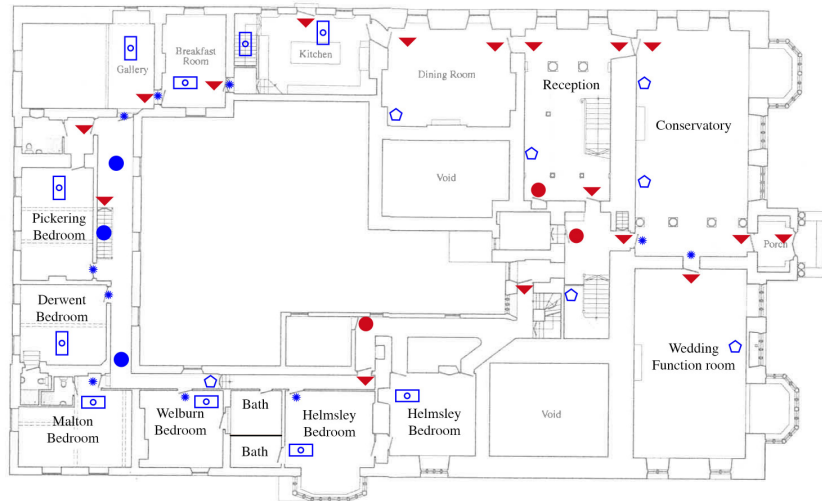
HOWSHAM HALL, HOWSHAM

FOR DINE LTD

PROPOSED FIRE IMPROVEMENT WORKS
FIRST FLOOR PLAN

matthewsomee
interior design & architecture

Ground Floor



Key:

- ▼ Non illuminated Fire-Exit sign
- Fire Door Keep Locked Shut sign
- Emergency Downlight
- Bulkhead
- ⬠ Twin Spot
- ★ FD305 - Intumescent Strips to apply all round edge of door and Perko door closers to be fit

HOWSHAM HALL, HOWSHAM

FOR DINE LTD

PROPOSED FIRE IMPROVEMENT WORKS
GROUND FLOOR PLAN

matthews m mee
interior design & architecture